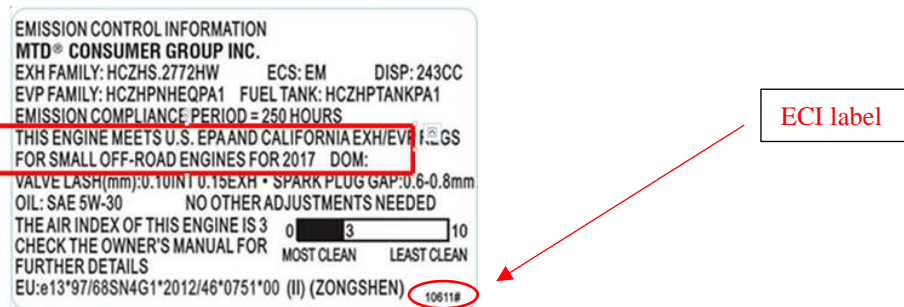


## SNOW THROWER LABEL ALERT FOR CALIFORNIA CONSUMERS ONLY

Wintertime engines are among the rare instances where the California Air Resources Board (ARB) does not have an evaporative standard. Specifically, 13 CCR §2751 states that snow throwers are exempt; however, your snow thrower has been voluntarily equipped with low-permeable fuel lines and metal tanks and there is an evaporative Emissions Control Information (ECI) label on the snow thrower's engine.

The Emission Control Information (ECI) label on these snow throwers represent that "THIS ENGINE MEETS U.S. EPA AND CALIFORNIA EXH/EVP REGS FOR SMALL OFF-ROAD ENGINES FOR (YEAR)." (See below)



To conform to the statutory requirements, the label should state the following: "THIS ENGINE MEETS U.S. EPA EXH/EVP AND CALIFORNIA EXH REGS FOR SMALL OFF-ROAD ENGINES FOR (YEAR)."

To remedy this issue a new ECI label can be mailed to you. To facilitate this, it is necessary for you to notify us of what your snow thrower's ECI label states specific to the year. We will need your snow thrower's serial number, the year listed in the red-box section above, and/or the ECI label number circled above. Please call **Customer Service at 1.800.800.7310 toll free week days between 8:00 a.m. and 8:00 p.m. EST or Saturday or Sunday between 9:00 a.m. and 5:00 p.m. EST.** Please select 1 for English, then enter your zip code, and select 3 to speak with a representative. Proceed to stay on the line when other options are presented. Next, select option 2 for Technical Support, then select option 2 for MTD engines, Powermore engines or Troy-Bilt engines. This will connect you to a customer service representative familiar with this issue.

We apologize for any inconvenience this may cause you and appreciate your cooperation in this matter. Please note that this does not affect your snow thrower's evaporative emission warranty; this will still be honored.